

## Roll up screen installation

### Removing temporary wood filler:

1. Remove roll up screen side cover. Figure 1
2. Remove and discard temporary wood filler. Figure 2

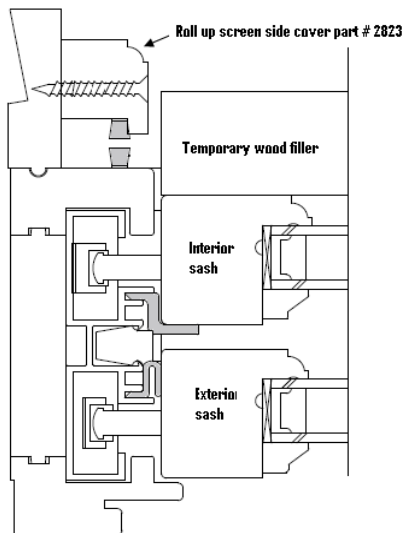


Figure 1.

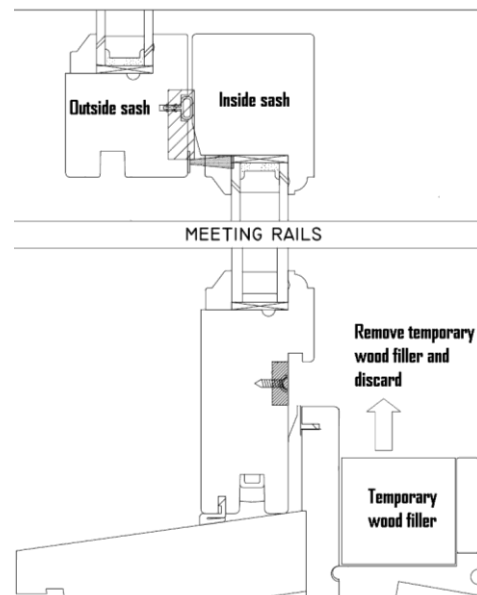


Figure 2.

### Installing the roll up screen cassette:

1. Match the screen cassette label (label is on the bottom of cassette) to the corresponding window label (label is located in the cavity where the temporary wood filler was).
2. Place the screen cassette in the cavity where the temporary wood filler was. Figure 3
3. Re-install the roll up screen side cover. Figure 4
4. Insure that the screen mesh travels freely in the screen track. Figure 4

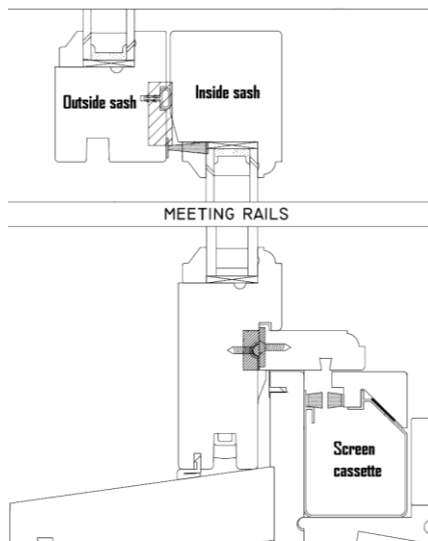


Figure 3

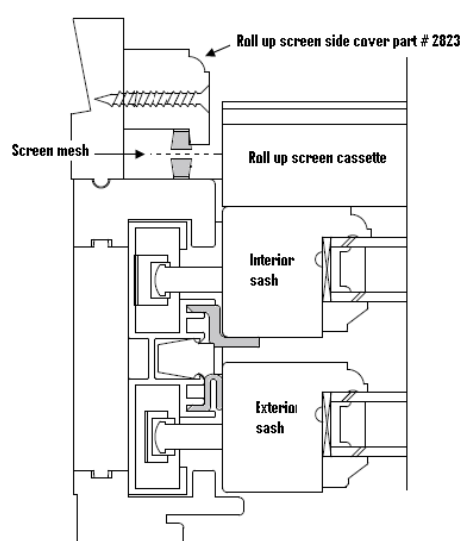


Figure 4